

①

- ② Light *Italic*
- Book *Italic*
- Medium *Italic*
- Bold *Italic*
- Black *Italic*

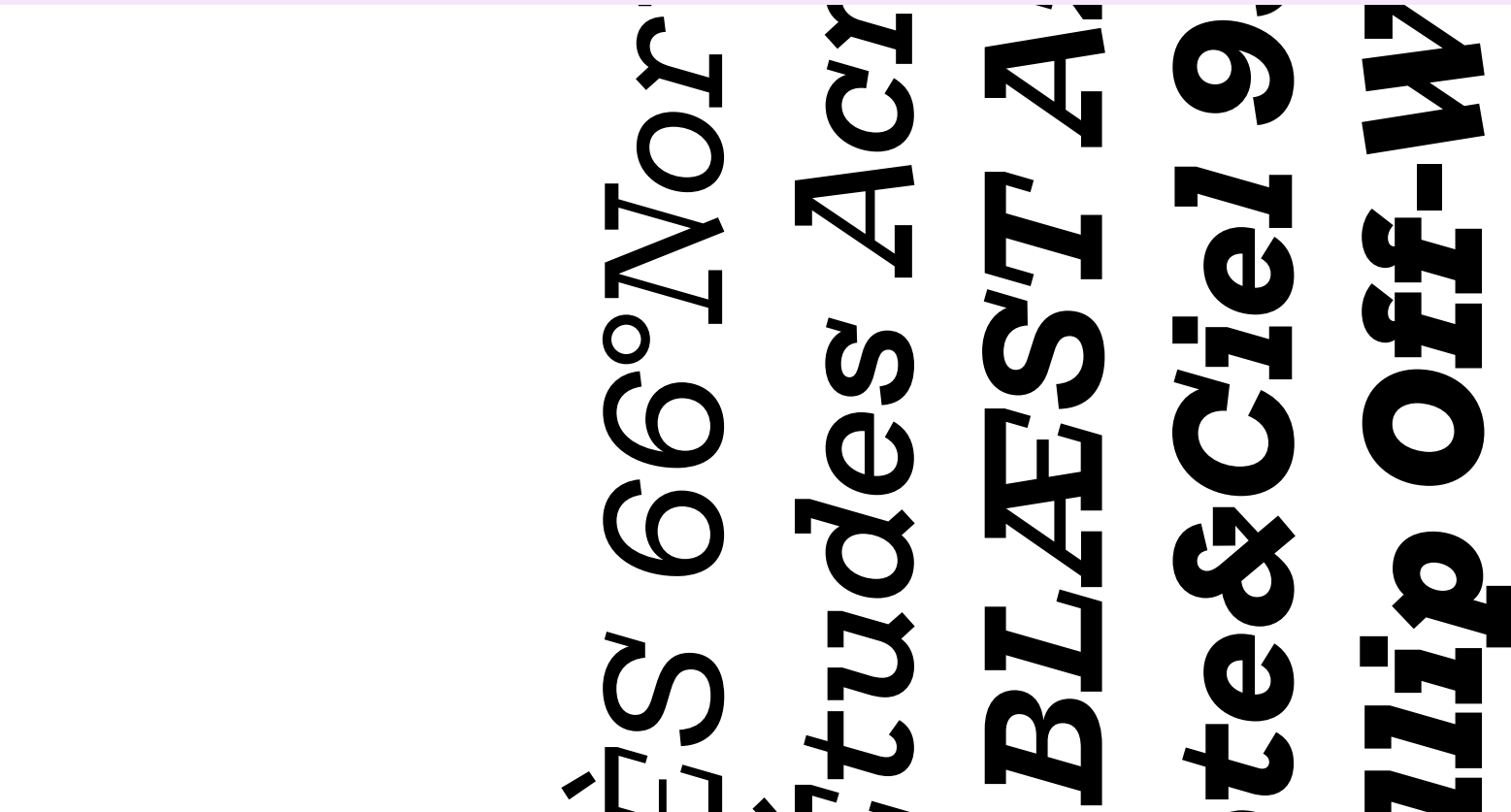
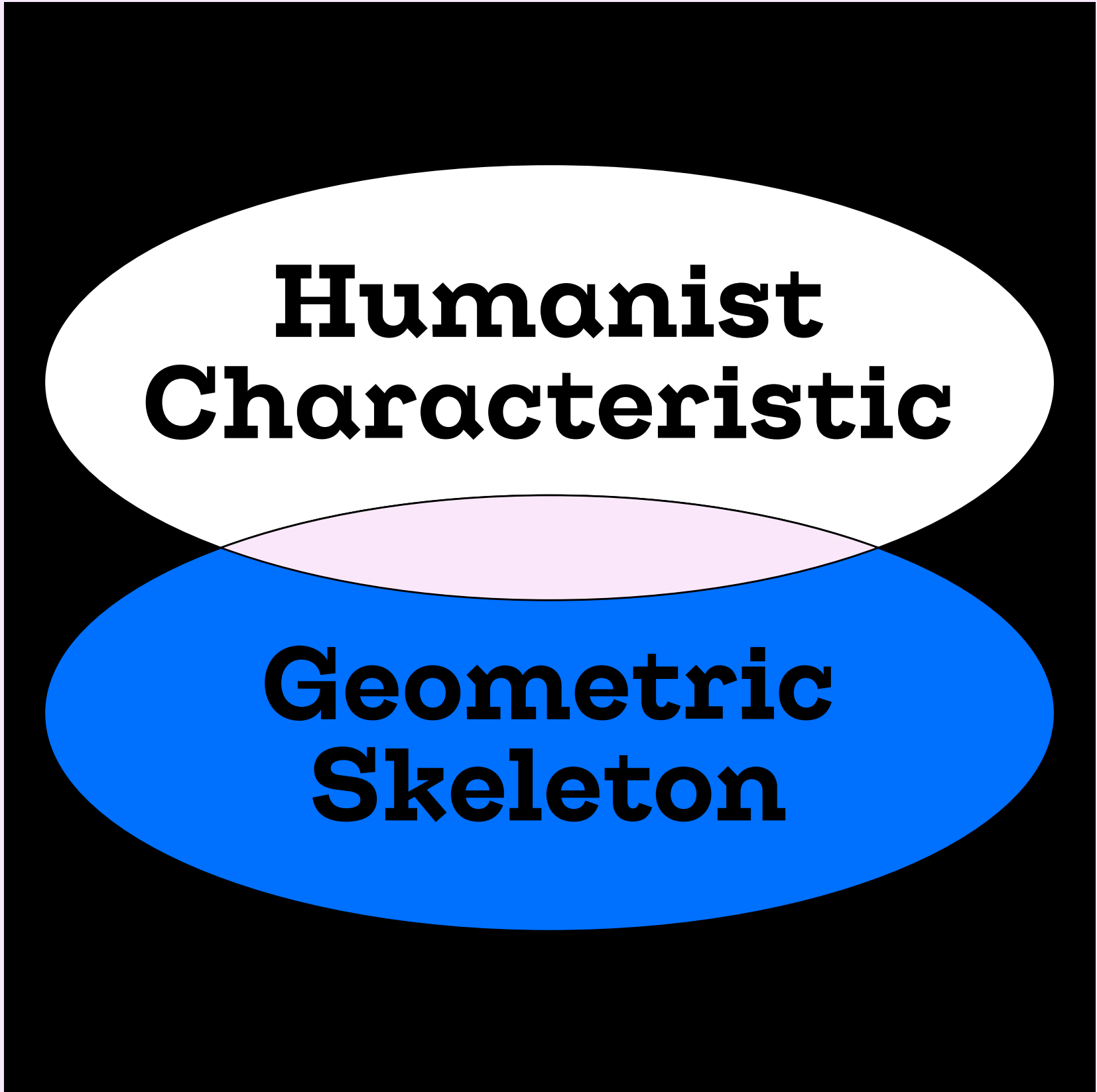
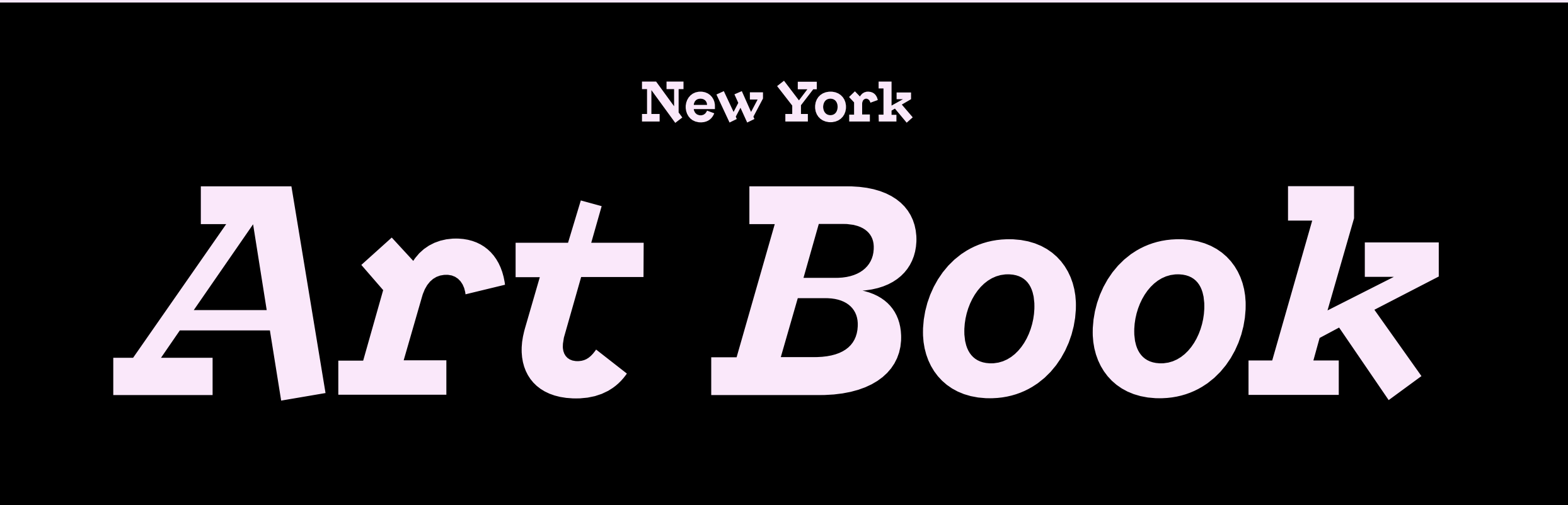
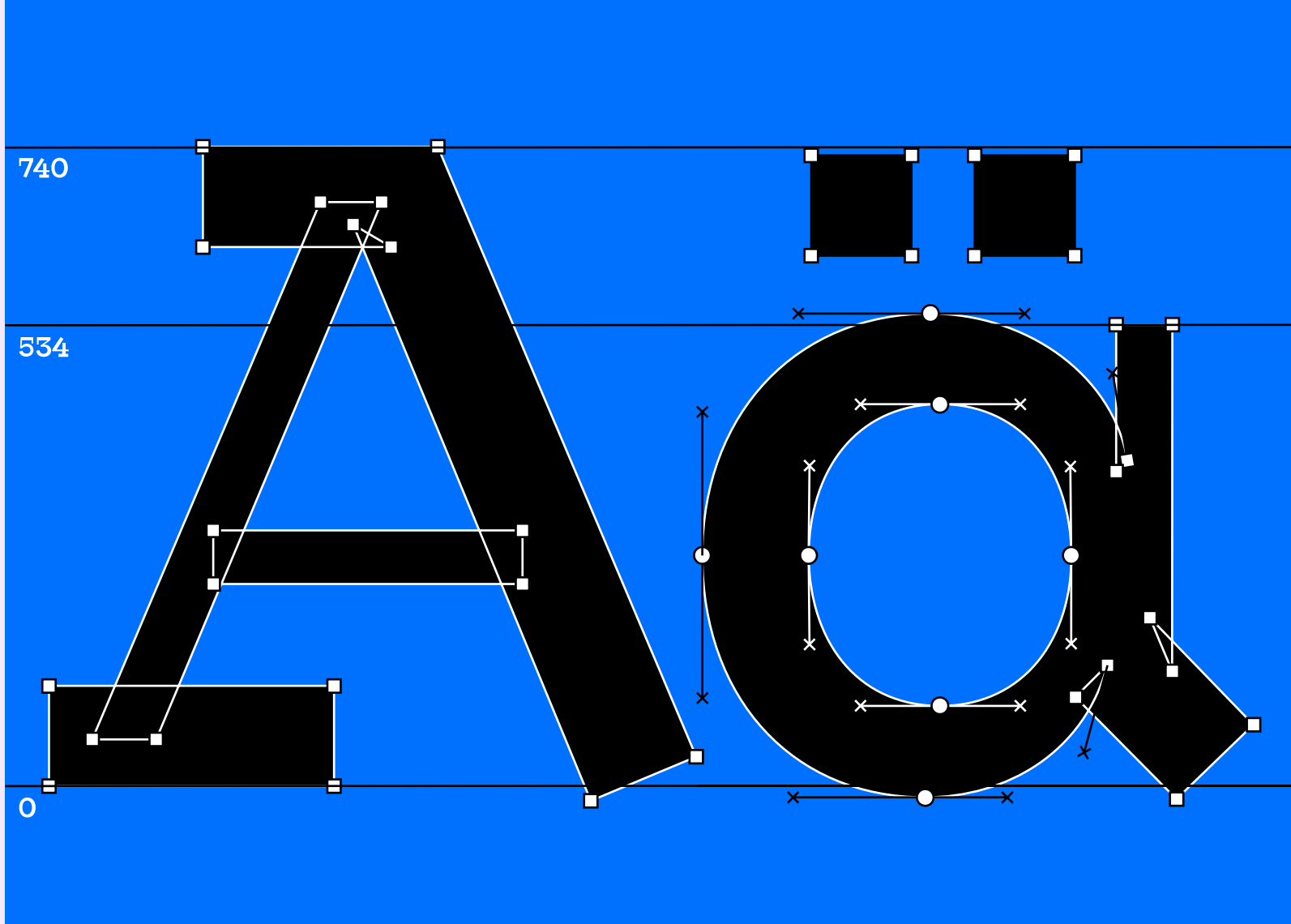
3

Looklyn

**Looklyn** is an affable slab with a non-tradition serif weight distribution.

**Its extra-thin vertical serifs** balance the weight of the body stroke, which creates a nice thick-and-thin rhythm that some other slab typefaces don't usually have.

*The skeleton is **geometric** and structural, while the open diagonals, such as A, K, V, W, and Y, are based on handwritten strokes. This hybrid of an **architectural skeleton** and **humanist characteristic** gives the typeface a contemporary yet approachable quality.*



AAAAAABBBBCCCCCDDDDD  
EEEEEEFFFFGGGGHHHH  
IIIIJJJJKKKKLLLLMMMM  
NNNNNOOOOOPPPPPQQQQ  
RRRRRSSSSSTTTTUUUUVVVV  
WWWWXXXXXXYYYYZZZZ  
11112222333344445555  
66667777888899990000

***AAAAABBBBBBCCCCCDDDDD***  
***EEEEEFFFFFFFFGGGGGHHHH***  
***IIIIJJJJKKKKLLLLMMMM***  
***NNNNNOOOOOPPPPPQQQQQ***  
***RRRRRSSSSSTTTTUUUUUVVVV***  
***WWWWXXXXXXYYYYZZZZ***  
***111122222333334444455555***  
***6666677777888889999900000***



**Humanist  
Characteristic**

A Venn diagram consisting of two overlapping ovals. The top oval is white and contains the text 'Humanist Characteristic'. The bottom oval is blue and contains the text 'Geometric Skeleton'. The intersection of the two ovals is shaded green.

**Geometric  
Skeleton**

CHARACTER SET

Medium  
30pt

UPPERCASE

A B C D E F G H I J K L M N O P Q R S T U V W X Y Z

LOWERCASE

a b c d e f g h i j k l m n o p q r s t u v w x y z

DIACRITICS UPPERCASE

Á Â Ã Ä Å Æ Ç È É Ê Ë  
Ì Í Î Ï Ñ Ò Ó Ô Õ Ö × Ø Ù Ú Û Ü Ý Þ ß  
À Á Â Ã Ä Å Æ Ç È É Ê Ë  
Ì Í Î Ï Ñ Ò Ó Ô Õ Ö × Ø Ù Ú Û Ü Ý Þ ß

DIACRITICS LOWERCASE

á â ã ä å æ ç è é ê ë ì í î ï ñ ò ó ô õ ö ÷ ø ù ú û ü ý þ ÿ  
à á â ã ä å æ ç è é ê ë ì í î ï ñ ò ó ô õ ö ÷ ø ù ú û ü ý þ ÿ

NUMBERS

0 1 2 3 4 5 6 7 8 9

SUPERIORS, INFERIORS & FRACTIONS

0 1 2 3 4 5 6 7 8 9 1/2 1/3 2/3 1/4 3/4 1/5 2/5 3/5 4/5 1/6 5/6 1/7 1/8 3/8 5/8 7/8 1/9

MONETARY

\$ ¢ £ € ¥ ₩ ₪ ₧

MATHEMATICAL FORMS

+ − × ÷ = ≠ ≥ ≤ > < ± ≈

PUNCTUATION AND SYMBOLS

.,:;...!;?¿·~\*#/\\_(){}[],,“”‘’”’«»‹›  
f@&!\$©®™°||†‡~^%%‰°μð~¬

ARROWS

↑ ↗ → ↘ ↓ ↙ ← ↘ ↔ ↕ ⇐ ⇨ ⇩ ⇪ ⇫ ⇬ ⇭ ⇮ ⇯ ⇰ ⇱ ⇲

CIRCLED NUMBERS

① ② ③ ④ ⑤ ⑥ ⑦ ⑧ ⑨ ⑩  
❶ ❷ ❸ ❹ ❺ ❻ ❼ ❽ ❾



FAMILY

100pt

Light

*Light Italic*

Book

*Book Italic*

Medium

*Medium Italic*

Bold

*Bold Italic*

Black

*Black Italic*

FAMILY

58pt

① Light	→ AaBbCcDdEe1234567890%
② Book	→ AaBbCcDdEe1234567890%
③ Medium	→ AaBbCcDdEe1234567890%
④ Bold	→ AaBbCcDdEe1234567890%
⑤ Black	→ AaBbCcDdEe1234567890%
① <i>Light Italic</i>	→ <i>AaBbCcDdEe1234567890%</i>
② <i>Book Italic</i>	→ <i>AaBbCcDdEe1234567890%</i>
③ <i>Medium Italic</i>	→ <i>AaBbCcDdEe1234567890%</i>
④ <i>Bold Italic</i>	→ <i>AaBbCcDdEe1234567890%</i>
⑤ <i>Black Italic</i>	→ <i>AaBbCcDdEe1234567890%</i>

Aa Bb Cc  
Rr Tt Yy

WEIGHT CONTRAST

Light  
Light Italic  
Medium  
  
96pt

Chicago **Paris** Rome *Mexico*  
Washington D.C. **Berlin** *Atlanta*  
**Stockholm** Toronto Seoul *Frankfurt*  
The Hague **Zürich** Baltimore  
Dubai *Singapore* Munich *Kyoto*  
Madrid Boston **Kyoto** Geneva  
*Yokohama* Taipei *Vancouver*

WEIGHT CONTRAST

Book  
Book Italic  
Bold  
  
96pt

San Francisco New York Po  
London Tokyo Philadelphia  
São Paulo *Amsterdam* Kyot  
*Taipei* Milano Reykjavík Be  
Istanbul *Munich* Hong Kon  
**Barcelona** Montreal Bangk  
Los Angeles Osaka *Sydney*

WEIGHT CONTRAST

Medium  
Medium Italic  
Black  
  
96pt

**Lisbon Frankfurt Melbourne**  
*Copenhagen* Taipei Calgary  
**Rio de Janeiro Basel** *Fukuoka*  
**Helsinki Oslo Auckland Perth**  
**Milan Vienna Ottawa Dublin**  
*Hamburg* Luxembourg City  
**Quebec City Bergen** *Edinburgh*

1

2

3

4

5

6

7

Issey Miyake Études Y-3

Alexander McQueen

**MM6 Maison Margiela**

**Comme des Garçons**

**Kenzo Off-White Clé**



*66°North F/CE.®*  
*1017 ALYX 9SM A.P.C.*  
*Aztech Mountain*  
*Martin Asbjørn*  
*TOMBOGO™ Séfir*

LOOKLYN

10 STYLES

DESIGNER

TIEN-MIN LIAO

MANUFACTURER

TYPEJI

GLYPHS#

521

LANGUAGE SUPPORT

Afrikaans	Filipino	Kalenjin	North	Sango	German
Albanian	Finnish	Kinyarwanda	Ndebele	Sangu	Taita
Asu	French	Kurdish	Northern	Sardinian	Taroko
Azerbaijani	Friulian	Latvian	Sami	Scottish	Teso
Basque	Galician	Lithuanian	Northern	Gaelic	Tsonga
Bemba	Ganda	Lojban	Sotho	Sena	Tswana
Bena	German	Low	Norwegian	Shambala	Turkish
Bosnian	Gusii	German	Bokmål	Shona	Turkmen
Catalan	Hungarian	Lower	Norwegian	Slovak	Upper
Cebuano	Icelandic	Sorbian	Nynorsk	Slovenian	Sorbian
Chiga	Ido	Luo	Nyanja	Soga	Vunjo
Colognian	Inari	Luxembourgish	Nyankole	Somali	Walloon
Cornish	Sami	Luyia	Occitan	South	Walser
Corsican	Indonesian	Machame	Oromo	Ndebele	Welsh
Croatian	Interlingua	Makhuwa-Meetto	Polish	Southern	Western
Czech	Irish	Makonde	Portuguese	Sotho	Frisian
Danish	Italian	Malagasy	Romanian	Spanish	Wolof
Dutch	Javanese	Malay	Romansh	Sundanese	Xhosa
English	Jju	Maltese	Rombo	Swahili	Zulu
Esperanto	Jola-Fonyi	Manx	Rundi	Swati	
Estonian	Kabuverdianu	Māori	Rwa	Swedish	
Faroese	Kalaallisut	Morisyen	Samburu	Swiss	

VERSION

1.001

YEAR

2023–2025

abc@typeji.com

@typeji

Thank you for downloading this type specimen.  
If you have any questions about the license, please visit  
Typeji.com for more info.