

①

- ② Light *Italic*
- Book *Italic*
- Medium *Italic*
- Bold *Italic*
- Black *Italic*

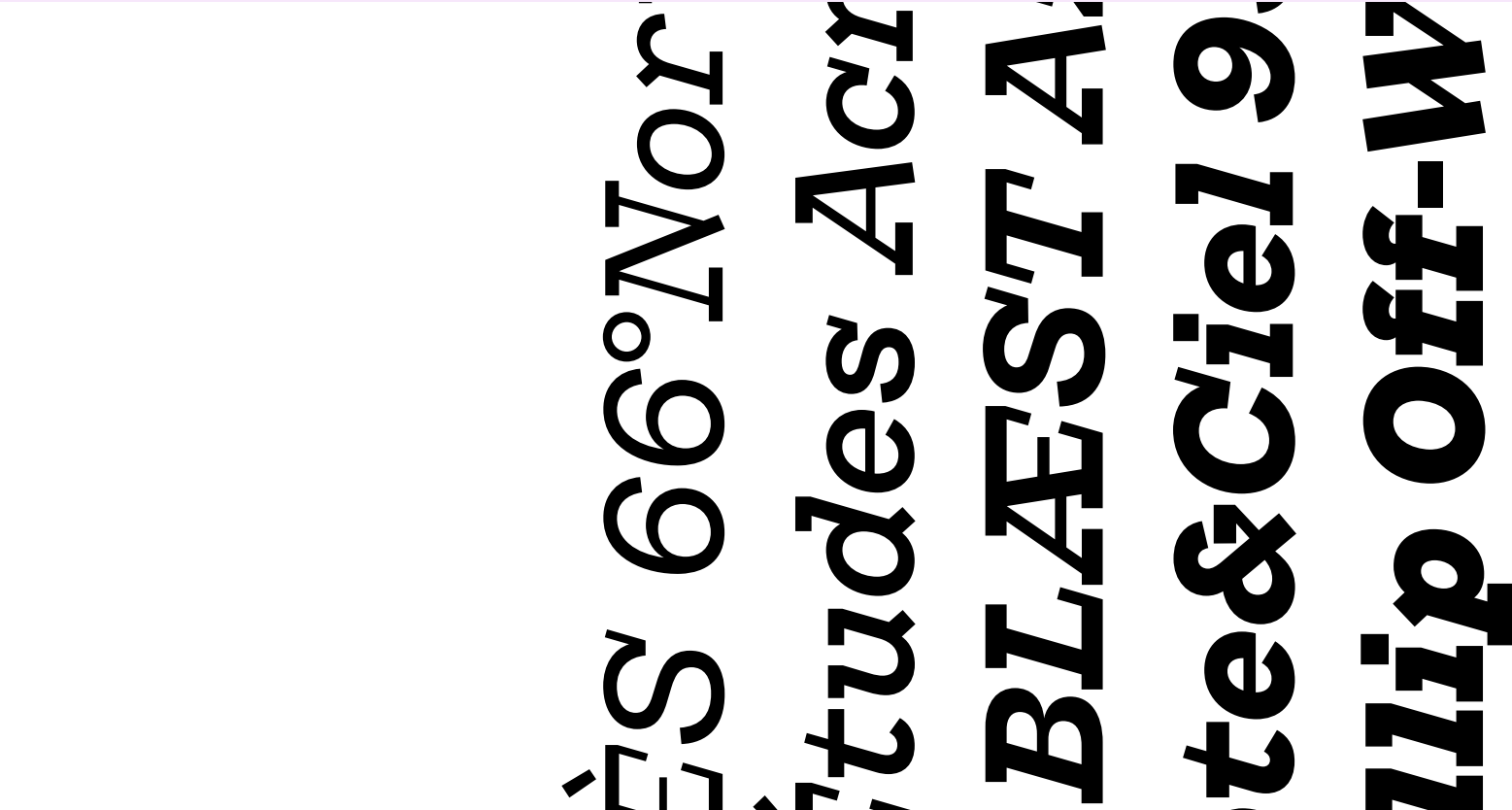
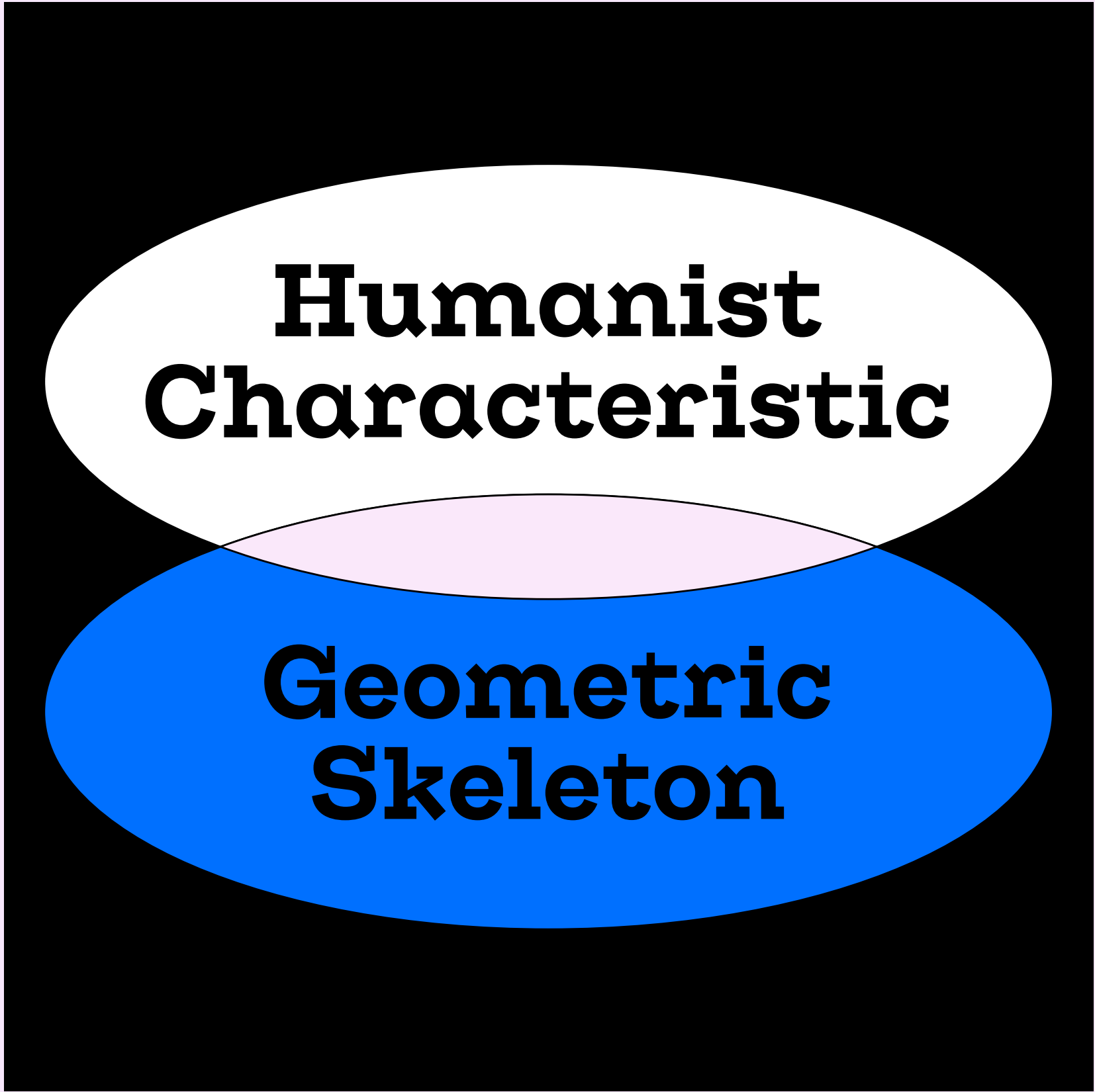
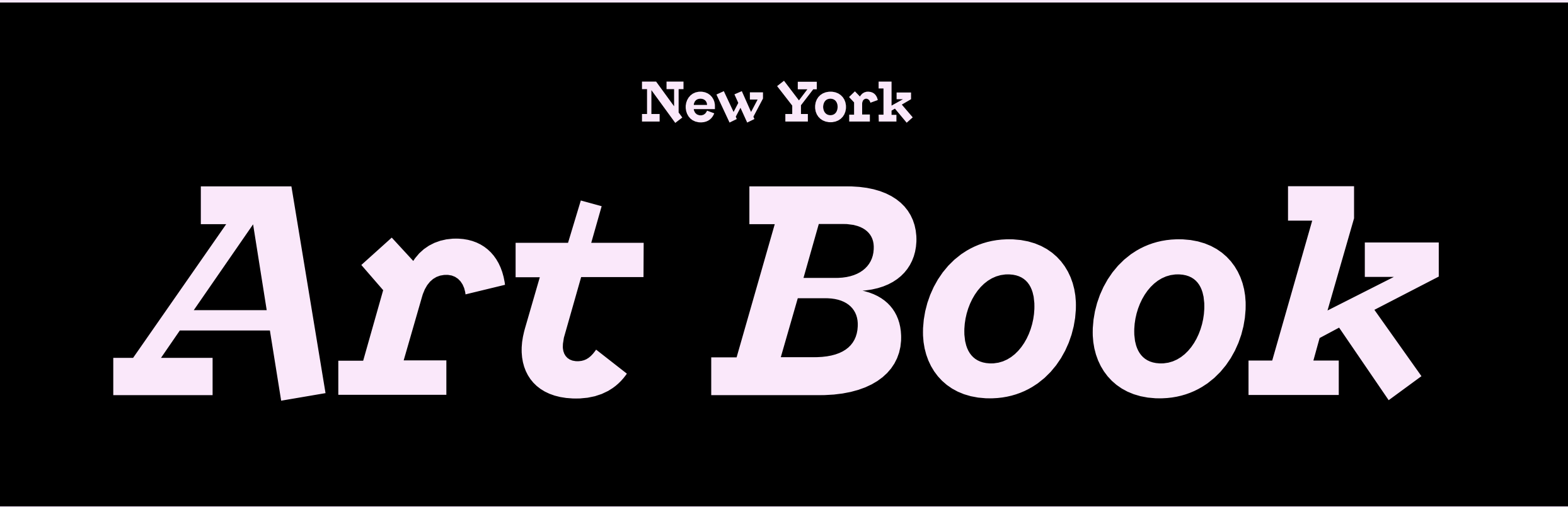
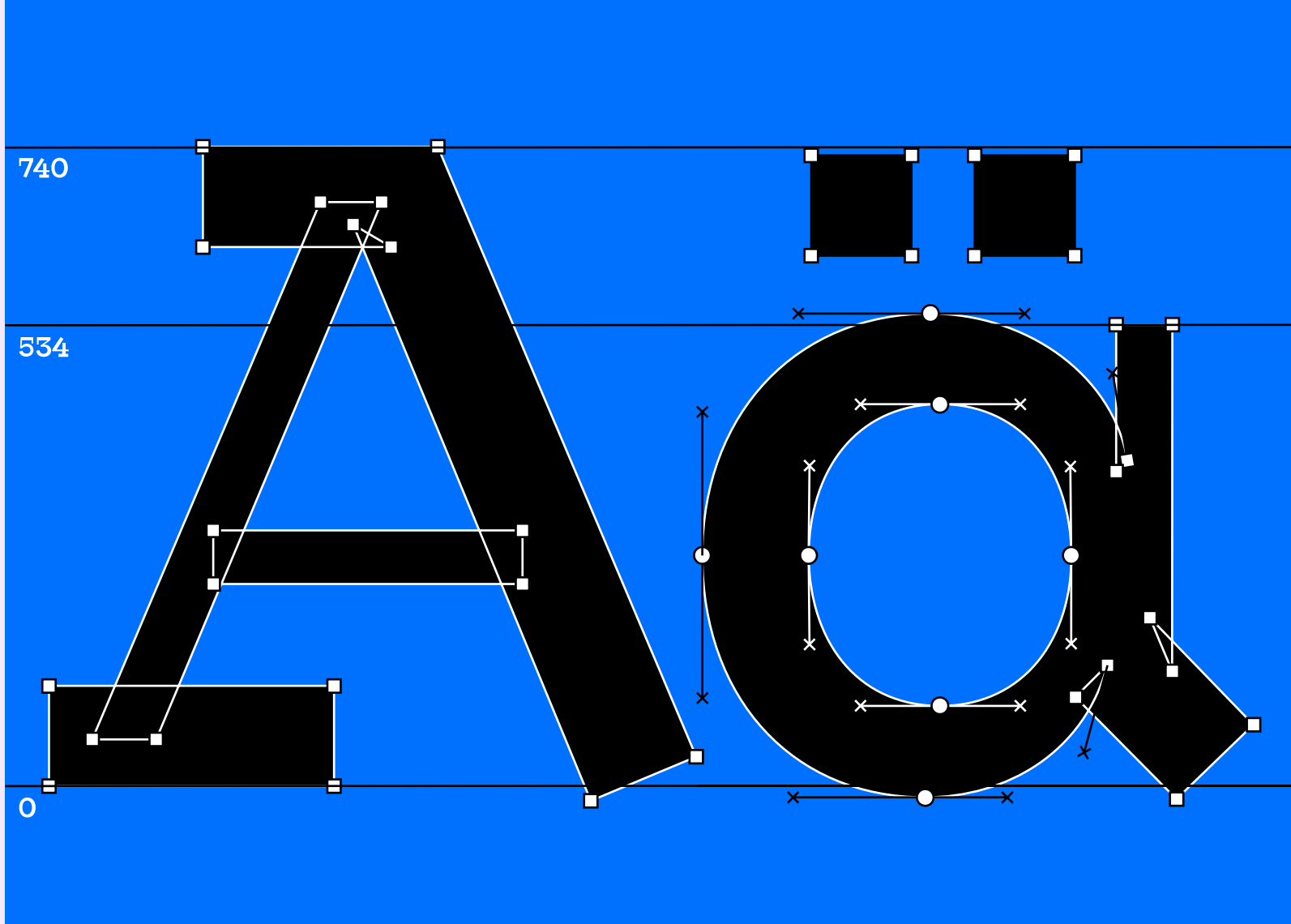
3

Looklyn

Looklyn is an affable slab with a non-tradition serif weight distribution.

Its extra-thin vertical serifs balance the weight of the body stroke, which creates a nice thick-and-thin rhythm that some other slab typefaces don't usually have.

*The skeleton is **geometric** and structural, while the open diagonals, such as A, K, V, W, and Y, are based on handwritten strokes. This hybrid of an **architectural skeleton** and **humanist characteristic** gives the typeface a contemporary yet approachable quality.*



AAAAAABBBBCCCCCDDDDD
EEEEEEFFFFGGGGHHHH
IIIIJJJJKKKKLLLLMMMM
NNNNNOOOOOPPPPPQQQQ
RRRRRSSSSSTTTTUUUUVVVV
WWWWXXXXXXYYYYZZZZ
11112222333344445555
66667777888899990000

AAAAAABBBBBBCCCCCDDDD
EEEEEEFFFFFFGGGGGHHHH
IIIIJJJJKKKKLLLLMMMM
NNNNNOOOOOPPPPPQQQQQ
RRRRRRSSSSSTTTTUUUUUVVVV
WWWWWWWXXXXXXYYYYZZZZ
111122222333334444455555
6666677777888889999900000



**Humanist
Characteristic**

A Venn diagram consisting of two overlapping rounded rectangles. The top rectangle is white and contains the text 'Humanist Characteristic'. The bottom rectangle is blue and contains the text 'Geometric Skeleton'. The intersection of the two rectangles is shaded green.

**Geometric
Skeleton**

CHARACTER SET

Medium
30pt

UPPERCASE

A B C D E F G H I J K L M N O P Q R S T U V W X Y Z

LOWERCASE

a b c d e f g h i j k l m n o p q r s t u v w x y z

DIACRITICS UPPERCASE

Á Â Ã Ä Å Æ Ç È É Ê Ë Ì Í Î Ï Ñ Ò Ó Ô Õ Ö Ø Ù Ú Û Ü Ý Þ ß à á â ã ä å æ ç è é ê ë ì í î ï ñ ò ó ô õ ö ø ù ú û ü ý þ ß

DIACRITICS LOWERCASE

á â ã ä å æ ç è é ê ë ì í î ï ñ ò ó ô õ ö ø ù ú û ü ý þ ß

NUMBERS- LINING AND OLDSTYLE

0 1 2 3 4 5 6 7 8 9

SUPERIORS & FRACTIONS

1² 3¹/₂ 1¹/₄ 3³/₄

MONETARY

\$ ¢ £ € ¥ ₩

MATHEMATICAL FORMS

+ − × ÷ = ≠ ≥ ≤ > < ± ≈

PUNCTUATION AND SYMBOLS

.,:;...!|?¿·~*#/_(){}[],,“”‘’”’«»‹›
f@&¶§©®™°||†‡~^%%‰°μ~¬

ARROWS

↑ ↗ → ↘ ↓ ↙ ← ↘ ↔ ↕ ⇐ ⇨ ⇩ ⇪ ⇧ ⇨

CIRCLED NUMBERS

① ② ③ ④ ⑤ ⑥ ⑦ ⑧ ⑨ ⑩
➊ ➋ ➌ ➍ ➎ ➏ ➐ ➑ ➒

FAMILY

100pt

Light

Light Italic

Book

Book Italic

Medium

Medium Italic

Bold

Bold Italic

Black

Black Italic

FAMILY

58pt

- ① Light
- ② Book
- ③ Medium
- ④ Bold
- ⑤ Black

→ AaBbCcDdEe1234567890%
→ AaBbCcDdEe1234567890%
→ AaBbCcDdEe1234567890%
→ AaBbCcDdEe1234567890%
→ AaBbCcDdEe1234567890%

- ① *Light Italic*
- ② *Book Italic*
- ③ *Medium Italic*
- ④ *Bold Italic*
- ⑤ *Black Italic*

→ *AaBbCcDdEe1234567890%*
→ *AaBbCcDdEe1234567890%*
→ *AaBbCcDdEe1234567890%*
→ *AaBbCcDdEe1234567890%*
→ *AaBbCcDdEe1234567890%*

Aa Bb Cc
Rr Tt Yy

WEIGHT CONTRAST

Light
Light Italic
Medium

96pt

Chicago **Paris** Rome *Mexico*
Washington D.C. **Berlin** *Atlanta*
Stockholm Toronto Seoul *Beijing*
The Hague **Zürich** Baltimore
Dubai *Singapore* Munich *Kyoto*
Madrid Boston **Kyoto** Geneva
Yokohama Taipei *Vancouver*

WEIGHT CONTRAST

Book
Book Italic
Bold

96pt

San Francisco New York Po
London Tokyo Philadelphia
São Paulo *Amsterdam* Kyot
Taipei Milano Reykjavík Be
Istanbul *Munich* Hong Kon
Barcelona Montreal Bangk
Los Angeles Osaka *Sydney*

WEIGHT CONTRAST

Medium
Medium Italic
Black

96pt

Lisbon Frankfurt Melbourne
Copenhagen **Taipei Calgary**
Rio de Janeiro Basel *Fukuoka*
Helsinki Oslo Auckland Perth
Milan Vienna Ottawa Dublin
Hamburg **Luxembourg City**
Quebec City Bergen *Edinburgh*

1

2

3

4

5 6

7

Issey Miyake Études Y-3
Alexander McQueen
MM6 Maison Margiela
Comme des Garçons
Kenzo Off-White Clé

66°North F/CE.®
1017 ALYX 9SM A.P.C.
Aztech Mountain
Martin Asbjørn
TOMBOGO™ Séfir

LOOKLYN

10 STYLES

DESIGNER

TIEN-MIN LIAO

MANUFACTURER

TYPEJI

GLYPHS#

437

LANGUAGE SUPPORT

Afrikaans	Filipino	Kalenjin	North	Sango	German
Albanian	Finnish	Kinyarwanda	Ndebele	Sangu	Taita
Asu	French	Kurdish	Northern	Sardinian	Taroko
Azerbaijani	Friulian	Latvian	Sami	Scottish	Teso
Basque	Galician	Lithuanian	Northern	Gaelic	Tsonga
Bemba	Ganda	Lojban	Sotho	Sena	Tswana
Bena	German	Low	Norwegian	Shambala	Turkish
Bosnian	Gusii	German	Bokmål	Shona	Turkmen
Catalan	Hungarian	Lower	Norwegian	Slovak	Upper
Cebuano	Icelandic	Sorbian	Nynorsk	Slovenian	Sorbian
Chiga	Ido	Luo	Nyanja	Soga	Vunjo
Colognian	Inari	Luxembourgish	Nyankole	Somali	Walloon
Cornish	Sami	Luyia	Occitan	South	Walser
Corsican	Indonesian	Machame	Oromo	Ndebele	Welsh
Croatian	Interlingua	Makhuwa-Meetto	Polish	Southern	Western
Czech	Irish	Makonde	Portuguese	Sotho	Frisian
Danish	Italian	Malagasy	Romanian	Spanish	Wolof
Dutch	Javanese	Malay	Romansh	Sundanese	Xhosa
English	Jju	Maltese	Rombo	Swahili	Zulu
Esperanto	Jola-Fonyi	Manx	Rundi	Swati	
Estonian	Kabuverdianu	Māori	Rwa	Swedish	
Faroese	Kalaallisut	Morisyen	Samburu	Swiss	

VERSION

1.000

YEAR

2023–2024

abc@typeji.com
@typeji
Thank you for downloading this type specimen.
If you have any questions about the license, please visit
Typeji.com for more info.

